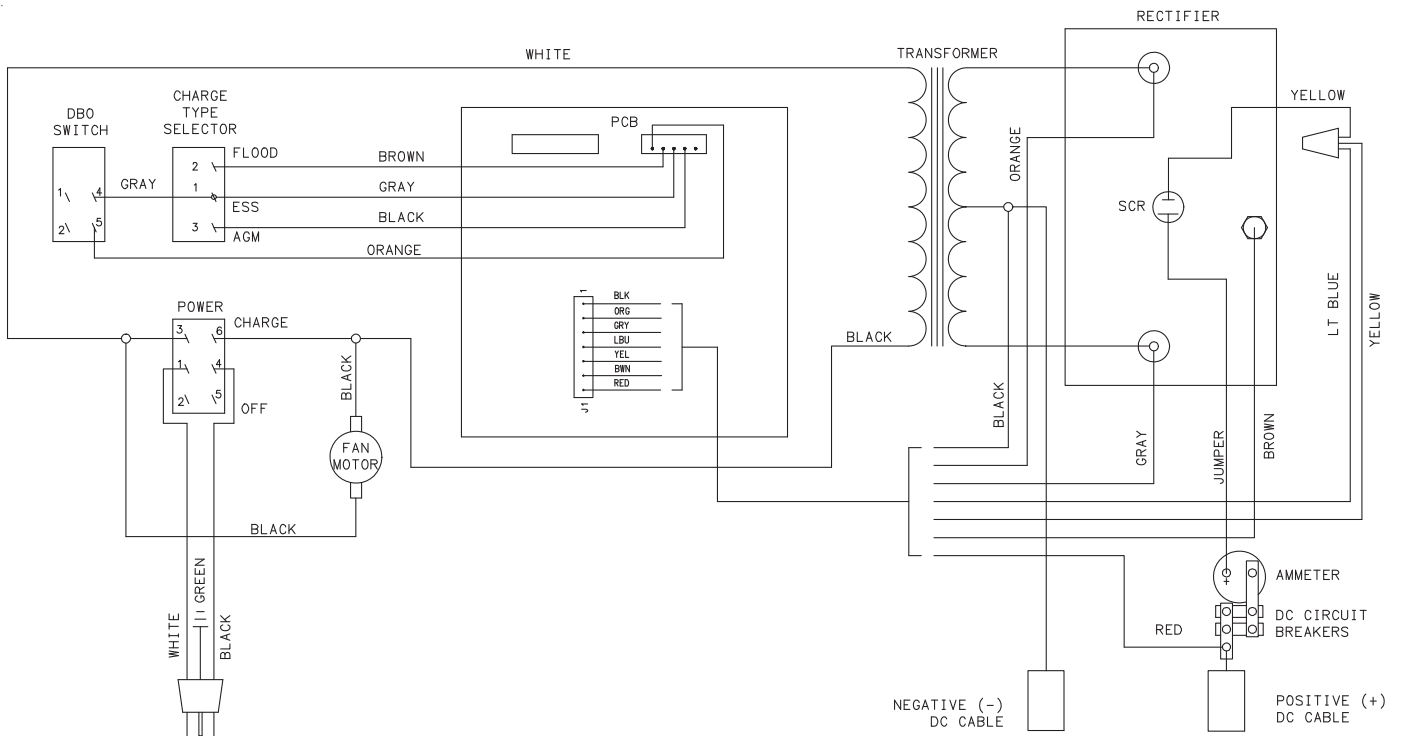
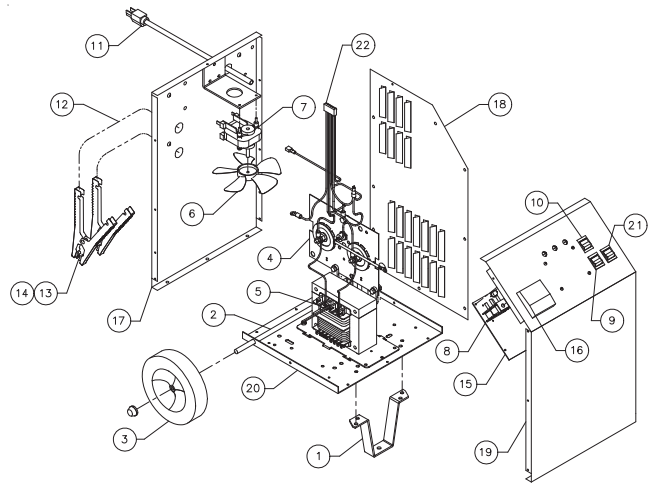


WIRING DIAGRAM



ESS6007B REPAIR PARTS

Item	Description	Part No.
1	Front Leg	605671
2	Axle w/nuts	610052
3	Wheel w/nuts (2)	611157
4	Rectifier	611193
5	Transformer	611168
6	Fan Blade	610189
7	Fan Motor w/blade	610190
8	DC Circuit Breaker (2)	610987
9	Switch Dead Battery Override	610263
10	Switch ON-OFF-ON	611167
11	AC Cord	610696
12	DC Cable Set	610820
13	Clamps (1 pair w/jaws)	6199
14	Jaw Kit (repairs 1 clamp)	610970
15	Control PCB	611155
16	Ammeter	610346
17	Back Panel	610977
18	Right Side Panel	611032
19	Front Panel	611221
20	Base Panel	610054
21	Switch	610291
22	Harness	611278
<u>Parts Not Shown</u>		
	Left Side Panel	611031
	Top Panel	611011
	Handle	605213
	Clamp Bar	610517



MAINTENANCE INSTRUCTIONS

Worn clamps should be replaced. Worn parts can lead to poor connections and present a safety hazard. See parts list for part number of D.C. Cord kit. Any Maintenance or repair of this unit that involves disassembly of the cabinet should be done only by a qualified serviceman. Incorrect reassembly may result in a risk of electric shock when the unit is subsequently used.